



2011

Prognostic Indicators and Outcome Measures for Surgical Removal of Symptomatic Nonadvanced Cataract

Sofia Charalampidou
Whitfield Clinic

James Loughman
Dublin Institute of Technology, james.loughman@dit.ie

John Nolan
Whitfield Clinic

Jim Stack
Waterford Institute of Technology

Lorraine Cassidy
Trinity College Dublin

See next page for additional authors

Follow this and additional works at: <http://arrow.dit.ie/otpomart>

 Part of the [Optometry Commons](#)

Recommended Citation

Charalampidou S, Loughman J, Nolan J, Stack J, Cassidy L, Pesudovs K, Beatty S. (2011). Prognostic Indicators and Outcome Measures for Surgical Removal of Symptomatic Non-Advanced Cataract. *Archives of Ophthalmology*, 129(9), 1155-61

This Article is brought to you for free and open access by the Department of Optometry at ARROW@DIT. It has been accepted for inclusion in Articles by an authorized administrator of ARROW@DIT. For more information, please contact yvonne.desmond@dit.ie, arrow.admin@dit.ie, brian.widdis@dit.ie.



This work is licensed under a [Creative Commons Attribution-NonCommercial-Share Alike 3.0 License](#)



Authors

Sofia Charalampidou, James Loughman, John Nolan, Jim Stack, Lorraine Cassidy, Konrad Pesudovs, and Stephen Beatty

ME- Please cut 6 lines from
back of article to fit on 2 pgs?
if possible. Thanks. E.P.

08/4/9/11

ONLINE FIRST

Prognostic Indicators and Outcome Measures for Surgical Removal of Symptomatic Nonadvanced Cataract

Sofia Charalampidou, MRCPI, MRCOphth; James Loughman, PhD; John Nolan, PhD; Jim Stack, PhD; Lorraine Cassidy, FRCOphth; Konrad Pesudovs, PhD; Stephen Beatty, MD, FRCOphth

Fix art

Objectives: To report changes in perceived visual functioning after surgery for symptomatic cataract with preoperative corrected distance visual acuity [CDVA] of 0.4 logMAR or better (Snellen equivalent, 20/50) and to investigate the relationship between any observed changes and preoperative physical characteristics and psychophysical consequences of the lens opacity and any changes in psychophysical findings after the procedure.

Methods: Eighty-five patients with cataract completed a validated questionnaire concerning functional vision satisfaction and a series of visual performance assessments before and 2 months after cataract surgery. The lens optical density and Lens Opacities Classification System III score of the cataract were recorded. Correlations between changes in the Rasch-analyzed questionnaire score and changes in visual performance after cataract surgery, as well as preoperative psychophysical measures, lens optical density, and Lens Opacities Classification System III score, were determined.

Results: The mean (SD) questionnaire score improved from 2.15 (0.36) to 1.54 (0.41) ($P < .001$). The preop-

erative questionnaire score ($r = -0.44$), preoperative mesopic glare disability [GD] (at 1.5 cycles per degree [cpd] [$r = 0.34$] and 3.0 cpd [$r = 0.27$]), and preoperative photopic GD (at 1.5 cpd [$r = 0.24$] and 3.0 cpd [$r = 0.30$]) showed statistically significant correlations with perceived improvements in visual functioning after surgery ($P < .05$). Changes in perceived visual functioning correlated significantly with changes in mesopic GD (at 1.5 cpd [$r = -0.43$] and 3.0 cpd [$r = -0.28$]; $P < .05$) and photopic GD (at 1.5 cpd [$r = -0.24$] and 3.0 cpd [$r = -0.39$]; $P < .05$). Neither preoperative CDVA nor change in CDVA after surgery correlated significantly with perceived improvement in visual functioning after the procedure ($P > .05$ for both).

Conclusion: Psychophysical tests alternative to CDVA better represent improvements in self-reported visual functioning following removal of symptomatic nonadvanced cataract.

Arch Ophthalmol.
Published online May 9, 2011.
doi:10.1001/archophthalmol.2011.111

AGE-RELATED CATARACT IS one of the most common eye pathologies in the Western world,^{1,4} and the unprecedented increase in life expectancy⁵ is leading to a dramatic rise in the demand for cataract surgery.^{1-3,6} To judge the holistic impact of modern cataract surgery on the life of patients undergoing this procedure—and thus its appropriateness—it is necessary to identify and quantify the preoperative visual loss and any benefits perceived by the patient.

The 2 most widely used methods for evaluating appropriateness for and benefits of cataract surgery include the measurement of corrected distance visual acuity (CDVA) and case history evaluation of patient-reported symptoms.⁷⁻¹³ Visual acuity (VA) thresholds for treatment in cataract surgery have decreased dramatically

in the past 15 years.¹⁴⁻¹⁶ It has recently been suggested that a minimum of 1 line of improvement on the logMAR chart in cases in which the preoperative VA is 0.4 logMAR (Snellen equivalent, 20/50) and a minimum of half a line of improvement in cases in which the preoperative VA is 0.2 logMAR (20/32) are required for a benefit to be perceived by the patient.^{7,17}

However, it has also been suggested that VA is relatively unaffected by cataract and may not be the most appropriate tool for the evaluation of visual functioning in patients with cataract.¹⁸⁻²³ Complementary techniques that have been investigated include contrast sensitivity (CS),²² glare disability (GD),²⁴ reading performance,²⁵ and visual functioning assessed by a questionnaire.^{12,26,27} Morphological^{28,29} and optical³⁰⁻³³ characteristics of lens opacification have also been used in the assessment of

Author Affiliations are listed at the end of this article.

cataract and have the advantage of being somewhat independent of patient cooperation and ocular comorbidity.

The study reported herein used patient self-reported visual functioning (responses to a validated questionnaire) and a number of psychophysical methods for assessing visual performance in patients with symptomatic cataract and CDVA of 0.4 logMAR or better (Snellen equivalent, $\geq 20/50$) before and after cataract surgery. The purposes of this study were to (1) investigate changes in subjective and self-reported visual functioning in patients undergoing surgery for symptomatic cataract who had high-contrast CDVA of 0.4 logMAR or better ($\geq 20/50$), (2) determine whether alternative psychophysical outcome measures are more appropriate than CDVA in reflecting any observed changes in visual functioning after surgery, and (3) investigate whether preoperative psychophysical, lens optical, or lens morphological measures are of prognostic value for surgical intervention in such cases.

In addition, we conducted a survey of all consultant ophthalmologists in the United Kingdom and the Republic of Ireland to report on the preoperative testing of visual function currently used before cataract surgery.

METHODS

PATIENTS

Eighty-five consecutive patients with nonadvanced cataract and no other ocular pathology who were scheduled to undergo phacoemulsification cataract extraction and implantation with an intraocular lens (Tecnis 1-Piece intraocular lens; Advanced Medical Optics, Inc, Santa Ana, California) were recruited from ophthalmic clinics at the Institute of Eye Surgery, Whitfield Clinic, Waterford, Ireland. *Nonadvanced cataract* was defined as a cataract for which CDVA was 0.4 logMAR or better (Snellen equivalent, 20/50). Only 1 eye of each patient (the one with the worse CDVA) was recruited. Previous contralateral cataract surgery was not an exclusion criterion. The fellow eyes of 65 of the 82 study eyes were phakic, whereas 17 were pseudophakic. Ethics committee approval was granted from the local regional ethics committee (Research Ethics Committee, Health Service Executive, South Eastern Area, Ireland), and the research was conducted in accordance with the principles of the Declaration of Helsinki.

Exclusion criteria were having CDVA worse than 0.4 logMAR, any preoperative ocular comorbidity (whether visually consequential or inconsequential), a history of ocular trauma, a history of diabetes mellitus, and any previous intraocular surgery in the proposed study eye.

Data were collected on 2 separate occasions: 1 to 4 weeks (mean [SD], 17 [16] days) before planned cataract surgery and 2 months (61 [16] days) after surgery.

SUBJECTIVE VISUAL FUNCTIONING

Subjectively perceived visual functioning in everyday life was evaluated using the Priquest questionnaire, which is part of the Nationell Indikationsmodell for Kataraktextraktion (NIKE) indication tool, a validated indication tool for cataract surgery used in Sweden since 2006.¹² Rasch analysis was applied to the questionnaire data using commercial software (WINSTEPS Rasch measurement computer program, version 3.70.0.2; Beaverton, Oregon [http://www.Winsteps.com]), thus calibrating item difficulty and patient ability on the same scale.^{34,35} We found a significant gain in precision after Rasch scaling of the questionnaire (a gain of 32% and a relative precision of 1.32),

thus reinforcing the current evidence with respect to the benefits of subjecting questionnaires to Rasch scaling.^{27,36,37}

VISUAL PERFORMANCE TESTING

Corrected distance visual acuity was measured monocularly and with the patient's best subjective refraction using the logMAR chart provided by a letter chart (Test Chart 2000 PRO; Thomson Software Solutions, Hertfordshire, England) at a testing distance of 4 m.

Contrast sensitivity was measured using the letter chart and the sine wave grating-based Functional Acuity Contrast Test (Optec 6500 Vision Tester; Stereo Optical Co, Inc, Chicago, Illinois). Best-corrected letter CS was determined using ETDRS (Early Treatment Diabetic Retinopathy Study) letters in logMAR form (monocularly with the study eye) at a distance of 4 m. The letters were shown in isolated rows, one row at a time, and the contrast of letters of predetermined size (and therefore a predetermined set of primary spatial frequencies) was reduced systematically using the software's contrast-adjustment function (calibrated before commencement of the study) until the patient's contrast threshold was reached (ie, the patient could read no more letters). Contrast sensitivity was also determined using the Functional Acuity Contrast Test device according to a protocol previously described.³⁸ Testing was performed under mesopic (3 candela per square meter [cd/m^2]) and photopic (85 cd/m^2) conditions.

The Functional Acuity Contrast Test was repeated in a manner similar to that of the CS test under mesopic and photopic conditions but with additional glare light (1 lux for mesopic and 10 lux for photopic glare testing) to assess GD.

Reading speed and near VA (logRAD [log reading acuity]) were measured with an English version of the standardized Radner reading charts while adhering to a previously described protocol.³⁹ Stereoacuity was measured using the TNO stereo test (Lameris Instrumenten, Utrecht, the Netherlands). Retinotopic ocular sensitivity was measured by microperimetry (Microperimeter MP 1; Nidek Technologies Srl, Albignasego, Italy) while adhering to a previously described protocol.⁴⁰ Retinotopic ocular sensitivity was calculated for 4 areas: fixation (1 stimulus), within the central 5° of fixation (average of 5 stimuli), between 5° and 10° of fixation (average of 8 stimuli), and within the central 10° of fixation (average of 13 stimuli).

LENS ASSESSMENT AND CATARACT SURGERY

Lens optical density was measured using Scheimpflug images taken by an eye scanner (Pentacam Comprehensive Eye Scanner, software version 1.16; Oculus Inc, Wetzlar, Germany) while adhering to a previously described protocol.³¹ The "densitometry along a line" part of the software was used to analyze the images, and a mean lens optical density value was recorded directly from the visual axis line appearing in the Scheimpflug image. Cataracts were categorized and graded clinically at the slitlamp in terms of nuclear, cortical, and posterior subcapsular cataract by a single ophthalmologist (S.B.) using the Lens Opacities Classification System III.²⁸

Phacoemulsification cataract surgery and intraocular lens implantation in the capsular bag were performed by a single surgeon (S.B.) using topical anesthesia and a standard technique.

SURVEY

A postal survey was sent to all consultant ophthalmologists listed in the databases of the Royal College of Ophthalmologists in the United Kingdom and of the Irish College of Ophthalmologists in the Republic of Ireland to ascertain the methods other than VA cur-

04/19/11

rently used in the preoperative assessment of patients with cataract. The mailing comprised an anonymous questionnaire with a stamped, addressed envelope for return of the completed survey.

STATISTICAL ANALYSIS

The sample size was determined by power analysis: thus, a sample of 82 individuals would have power in excess of 80% to detect a correlation of 0.30 at the 5% level of significance. Descriptive statistics were calculated for all measured variables, including demographic, ocular, refractive, psychophysical, cataract optical, and cataract morphological data, as well as data on subjective visual functioning (the questionnaire) and the survey responses. Visual acuity rating scores⁴¹ were used for the statistical analysis of VA data. Statistical analysis was performed using the PASW Statistics 18.0 software package (IBM Corp, Somers, NY).

Preoperative and postoperative measures were compared using the paired-samples *t* test (for continuous variables: Rasch-scaled score, CDVA, spherical equivalent, CS, GS, logRAD, reading speed, and retinal sensitivity) or the Wilcoxon 2-related-samples signed ranks test (for stereopsis, the categorical variable). The independent-samples *t* test was used to compare Rasch-scaled scores in VA subgroups (subgroups based on having preoperative CDVA of <0.2 or ≥0.2 logMAR and also based on having preoperative CDVA of <0 or ≥0 logMAR).

Correlations between observed changes in Rasch-scaled scores and observed changes in psychophysical measures after cataract surgery, as well as correlations between observed changes in Rasch-scaled scores and preoperative psychophysical measures (lens optical density and Lens Opacities Classification System III scores), were investigated using Spearman rank correlations. Tests were 2-sided in all analyses, and *P* ≤ .05 was considered statistically significant.

RESULTS

Eighty-five patients (85 eyes) met the inclusion criteria and were recruited into this study. Two patients developed transient corneal edema, and 1 patient developed self-limiting cystoid macular edema. Their data were therefore excluded from analysis, thus yielding data from 82 eyes of 82 patients for analysis.

The mean (SD) age was 66.8 (8.8) years (range, 47-85 years). The male to female ratio was 28:54, and the right eye to left eye ratio was 39:43. The mean (SD) time from preoperative assessment to surgery was 17 (16) days (range, 1-90 days), and the mean (SD) follow-up was 61 (16) days (range, 15-120 days).

The mean (SD) Rasch-scaled questionnaire score improved from 2.15 (0.36) (range, 1.37-3.13) to 1.54 (0.41) (range, 1.00-2.61; *P* < .01). All psychophysical measures tested, with the exception of CDVA of the fellow eye, exhibited statistically significant improvements after surgery (Table 1).

The following preoperative (baseline) psychophysical variables showed statistically significant correlations with observed changes in the Rasch-scaled questionnaire score after cataract surgery: CS by letters at 1.2 and 2.4 cycles per degree (cpd), mesopic CS by gratings at 1.5 cpd, mesopic GD at 1.5 and 3.0 cpd, and photopic GD by gratings at 1.5 and 3.0 cpd (Table 2). The remaining variables were not significantly correlated (*P* > .05 for all). There was no significant difference between preoperative (baseline) CDVA subgroups in terms of observed changes in Rasch-scaled questionnaire score af-

ter cataract surgery (Figure 1). The relationship between the preoperative Rasch-scaled questionnaire score and observed changes in the Rasch-scaled questionnaire score after cataract surgery is represented by a scatterplot (Figure 2), and the correlation between these variables was statistically significant (*r* = -0.44; *P* < .001).

Changes in the following psychophysical variables after cataract surgery showed statistically significant correlations with changes in the Rasch-scaled questionnaire score: CS by letters at 1.2, 2.4, and 24.0 cpd; mesopic GD at 1.5 and 3.0 cpd; photopic GD at 1.5, 3.0, and 6.0 cpd; reading acuity; and reading speed at a print size of 0.5 logRAD and at print sizes between 0.8 and 1.2 logRAD (Table 3). Changes in the remaining variables were not significantly correlated with changes in the Rasch-scaled questionnaire score (*P* > .05 for all).

SURVEY

The survey was mailed to all 972 members of the Royal College of Ophthalmologists and all 66 members of the Irish College of Ophthalmologists, with a 56.1% response rate (582 responses). Of the respondents, 38 (6.5%) did not perform cataract surgery, thus yielding 544 responses for analysis. Routinely used methods of preoperative visual function assessment and cataract morphological assessment are illustrated in Figure 3. In brief, 100.0% of consultant ophthalmic surgeons use VA (90.8% use Snellen, 9.1% use logMAR, and 9.1% use both Snellen and logMAR) in the preoperative assessment of visual function before cataract surgery, whereas 2.6% use a validated questionnaire and 2.2% test CS and/or GD.

COMMENT

To our knowledge, this study represents the first evaluation of prognostic indicators and outcome measures for surgical removal of symptomatic nonadvanced cataract in a way that relates to patients' subjectively perceived improvement in visual functioning after the procedure. We report that patients' self-reported impairment of visual functioning attributable to cataract with CDVA of 0.4 logMAR or better (Snellen equivalent, 20/50) was alleviated by surgery. Our results are consistent with previous studies investigating improvement in visual functioning after cataract surgery^{18,36,43} and are consistent with guidelines published by the American Academy of Ophthalmology (http://one.aao.org/CE/PracticeGuidelines/PPP_Content.aspx?cid=a80a87ce-9042-4677-85d7-4b876deed276#section4). However, our results are not in keeping with the recommendations of some investigators,^{7,11,17} who have stated that the threshold for cataract surgery should be based on preoperative CDVA of 0.3 logMAR (Snellen equivalent, 20/40) for the better eye and 0.52 logMAR (20/62) for the worse eye and who contend that success should be defined as at least 2 lines of gain in logMAR CDVA. Nevertheless, the authors of one of these studies¹¹ did concede that the ethical considerations of setting such preoperative VA limits for cataract surgery are open to criticism and that visual symptoms reported by the patient should represent an indication for operating in patients with good CDVA.

PS/4/19/11
 align on open power
 align on decision

Table 1. Changes in Psychophysical Measures After Cataract Surgery in 82 Patients

| Variable | Mean (SD) | | P Value |
|--|--------------|---------------|---------|
| | Preoperative | Postoperative | |
| High-contrast VA, logMAR | | | |
| CDVA in study eye | 0.18 (0.16) | 0.02 (0.1) | <.001 |
| CDVA in fellow eye | 0.12 (0.12) | 0.10 (0.14) | .20 |
| Refractive status: SE in study eye, D | 0.10 (2.8) | -0.31 (0.62) | .20 |
| Photopic logCS by letters according to spatial frequency, cpd | | | |
| 1.2 (n = 79) | 1.38 (0.19) | 1.70 (0.26) | <.001 |
| 2.4 (n = 79) | 1.31 (0.25) | 1.63 (0.24) | <.001 |
| 6.0 (n = 78) | 1.00 (0.31) | 1.43 (0.20) | <.001 |
| 9.6 (n = 72) | 0.78 (0.29) | 1.23 (0.22) | <.001 |
| 15.2 (n = 53) | 0.54 (0.27) | 1.00 (0.21) | <.001 |
| 24.0 (n = 13) | 0.34 (0.14) | 0.59 (0.31) | .03 |
| Mesopic logCS by gratings according to spatial frequency, cpd | | | |
| 1.5 (n = 79) | 1.44 (0.22) | 1.83 (0.16) | <.001 |
| 3.0 (n = 77) | 1.51 (0.24) | 1.93 (0.19) | <.001 |
| 6.0 (n = 40) ^a | 1.31 (0.20) | 1.63 (0.25) | <.001 |
| 12.0 (n = 2) ^a | 1.11 (0.10) | 1.11 (0.10) | <.001 |
| 18.0 (n = 1) ^a | 0.60 (n) | 0.90 (n) | ... |
| Photopic logCS by gratings according to spatial frequency, cpd | | | |
| 1.5 (n = 79) | 1.35 (0.20) | 1.71 (0.16) | <.001 |
| 3.0 (n = 79) | 1.58 (0.22) | 1.97 (0.14) | <.001 |
| 6.0 (n = 57) | 1.46 (0.21) | 1.90 (0.21) | <.001 |
| 12.0 (n = 24) ^a | 1.16 (0.17) | 1.48 (0.21) | <.001 |
| 18.0 (n = 19) ^a | 0.95 (0.20) | 1.19 (0.27) | <.001 |
| Mesopic logGD by gratings according to spatial frequency, cpd | | | |
| 1.5 (n = 64) | 1.31 (0.23) | 1.61 (0.24) | <.001 |
| 3.0 (n = 61) | 1.45 (0.22) | 1.78 (0.21) | <.001 |
| 6.0 (n = 22) ^a | 1.36 (0.25) | 1.58 (0.17) | .02 |
| 12.0 (n = 1) ^a | 0.09 (n) | 0.09 (n) | ... |
| 18.0 (n = 1) ^a | 0.78 (n) | 0.78 (n) | ... |
| Photopic logGD by gratings according to spatial frequency, cpd | | | |
| 1.5 (n = 74) | 1.34 (0.20) | 1.62 (0.18) | <.001 |
| 3.0 (n = 71) | 1.57 (0.20) | 1.91 (0.18) | <.001 |
| 6.0 (n = 47) | 1.47 (0.22) | 1.84 (0.23) | <.001 |
| 12.0 (n = 22) ^a | 1.14 (0.15) | 1.49 (0.24) | <.001 |
| 18.0 (n = 13) ^a | 1.01 (0.21) | 1.19 (0.30) | .05 |
| Reading performance | | | |
| logRAD (n = 80) | 0.33 (0.21) | 0.19 (0.09) | <.001 |
| logRAD score (n = 80) | 0.33 (0.21) | 0.20 (0.09) | <.001 |
| Reading speed, wpm, by print size, logRAD | | | |
| 1.2 (n = 80) | 150 (31) | 170 (31) | <.001 |
| 1.1 (n = 80) | 144 (31) | 162 (30) | <.001 |
| 0.9 (n = 77) | 149 (37) | 169 (32) | <.001 |
| 0.8 (n = 77) | 149 (36) | 164 (30) | <.001 |
| 0.7 (n = 77) | 143 (37) | 166 (32) | <.001 |
| 0.6 (n = 72) | 138 (39) | 162 (37) | <.001 |
| 0.5 (n = 71) | 136 (49) | 157 (40) | <.001 |
| 0.4 (n = 68) | 130 (42) | 156 (42) | <.001 |
| 0.3 (n = 64) | 97 (55) | 142 (43) | <.001 |
| 0.2 (n = 31) | 101 (41) | 129 (50) | .01 |
| 0.1 (n = 2) | 110 (16) | 137 (22) | .10 |
| Retinotopic ocular sensitivity, dB | | | |
| Fixation (n = 81) | 14.6 (5.0) | 17.4 (3.4) | <.001 |
| Central 5° (n = 81) | 15.9 (3.8) | 18.6 (1.9) | <.001 |
| Between 5° and 10° (n = 81) | 16.5 (3.5) | 18.8 (2.0) | <.001 |
| Central 10° (n = 81) | 16.3 (3.6) | 18.7 (1.9) | <.001 |
| Stereopsis, median, mode, min of arc (n = 80) | 120, 120 | 120, 60 | <.001 |

Abbreviations: CDVA, corrected distance visual acuity; cpd, cycles per degree; CS, contrast sensitivity; D, diopters; ellipses, not applicable; GD, glare disability; logRAD, log reading acuity; SE, spherical equivalent; VA, visual acuity; wpm, words per minute.

^aOnly a small number of patients achieved the minimum score during CS and GD testing by gratings. This is owing to a known floor effect when testing CS/GD with the Functional Acuity Contrast Test, in the presence of cataract.⁴²

In this study, all psychophysical measures tested, with the exception of CDVA of the fellow eye, showed statistically significant improvements after surgery. All these

statistically significant changes are of limited or indeterminate clinical value unless associated with improvement in subjectively perceived visual functioning after

Table 2. Significant Correlations Between Preoperative (Baseline) Psychophysical Variables and Postoperative Changes in Rasch-Scaled Questionnaire Score

Psychophysical

| Preoperative Variable | Spearman Correlation With Postoperative Changes in Rasch-Scaled Questionnaire Score |
|--|---|
| Contrast sensitivity | |
| Photopic by letters according to spatial frequency, cpd | |
| 1.2 (n = 79) | -0.27 ^a |
| 2.4 (n = 79) | -0.30 ^a |
| Mesopic by gratings according to spatial frequency, cpd | 0.22 ^a |
| 1.5 (n = 79) | |
| Glare disability | |
| Mesopic by gratings according to spatial frequency, cpd | |
| 1.5 (n = 64) | 0.34 ^b |
| 3.0 (n = 61) | 0.27 ^a |
| Photopic by gratings according to spatial frequency, cpd | |
| 1.5 (n = 4) | 0.24 ^a |
| 3.0 (n = 71) | 0.30 ^b |

Abbreviation: cpd, cycles per degree.
^aCorrelation is significant at the .05 level (2-tailed).
^bCorrelation is significant at the .01 level (2-tailed).

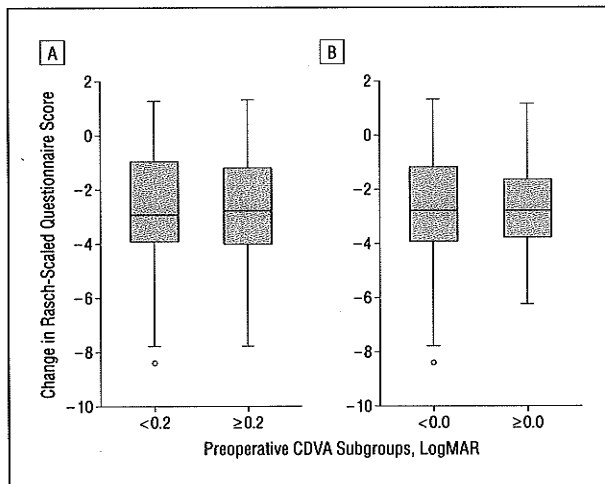


Figure 1. Change in Rasch-scaled questionnaire scores of patients in various preoperative (baseline) corrected distance visual acuity (CDVA) subgroups. A, Change in questionnaire scores of patients with preoperative CDVA of 0.2 logMAR or better (Snellen equivalent, 20/32; 46 patients) vs patients with preoperative CDVA of less than 0.2 logMAR (20/32; 36 patients; $P = .93$, paired t test). B, Change in questionnaire scores of patients with preoperative CDVA of 0.0 logMAR or better (Snellen equivalent, 20/20; 9 patients) vs patients with preoperative CDVA of less than 0.0 logMAR (20/20; 73 patients; $P = .965$, paired t test). Each box is given by the 75% percentile (top) and 25% percentile (bottom) and its length (interquartile range) by the difference between the 2 percentiles. The horizontal line inside the box represents the median (50% percentile). The whiskers represent 95% confidence intervals. The open circles represent outliers outside the 95% confidence intervals.

the procedure. We found that improvement in the Rasch-scaled questionnaire score correlated significantly with improvement in CS and GD at particular spatial frequencies. In addition, and of prognostic value, we found significant correlations between improvement in the ques-

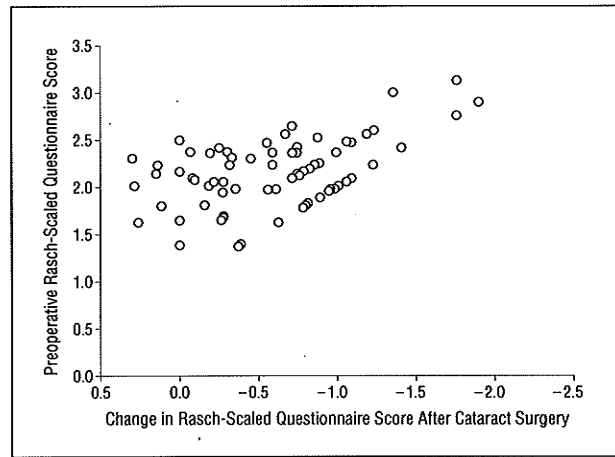


Figure 2. Preoperative (baseline) Rasch-scaled questionnaire score vs change in Rasch-scaled questionnaire score.

05/4/1911

Postoperative

Table 3. Significant Correlations Between Postoperative Changes in Psychophysical Variables and Postoperative Changes in Rasch-Scaled Questionnaire Score

| Psychophysical Variable | Spearman Correlation With Postoperative Changes in Rasch-Scaled Questionnaire Score |
|--|---|
| Contrast sensitivity | |
| Photopic by letters according to spatial frequency, cpd | |
| 1.2 (n = 79) | -0.32 ^b |
| 2.4 (n = 79) | -0.28 ^b |
| 24.0 (n = 13) | -0.48 ^b |
| Glare disability | |
| Mesopic by gratings according to spatial frequency, cpd | |
| 1.5 (n = 64) | -0.43 ^b |
| 3.0 (n = 61) | -0.28 ^b |
| Photopic by gratings according to spatial frequency, cpd | |
| 1.5 (n = 74) | -0.24 ^a |
| 3.0 (n = 71) | -0.39 ^b |
| 6.0 (n = 47) | -0.35 ^b |
| Reading performance | |
| logRAD | 0.26 ^b |
| Reading speed, wpm, by print size | |
| 1.2 (n = 80) | -0.32 ^b |
| 1.1 (n = 80) | -0.29 ^b |
| 0.9 (n = 77) | -0.35 ^b |
| 0.8 (n = 77) | -0.22 ^b |
| 0.5 (n = 71) | -0.28 ^b |

Abbreviation: cpd, cycles per degree; wpm, words per minute.
^aCorrelation is significant at the .05 level (2-tailed).
^bCorrelation is significant at the .01 level (2-tailed).

tionnaire score and preoperative (baseline) GD at the same spatial frequencies. This latter finding indicates that GD not only is a useful outcome measure for cataract surgery but also may be a valuable prognostic indicator for improvement in visual functioning attributable to the lens opacity after successful surgery. We believe these findings are consistent with the clinical experience of many ophthalmic surgeons who see patients reporting decreased visual functioning despite good high-contrast

logRAD, log reading acuity

02/4/9/11

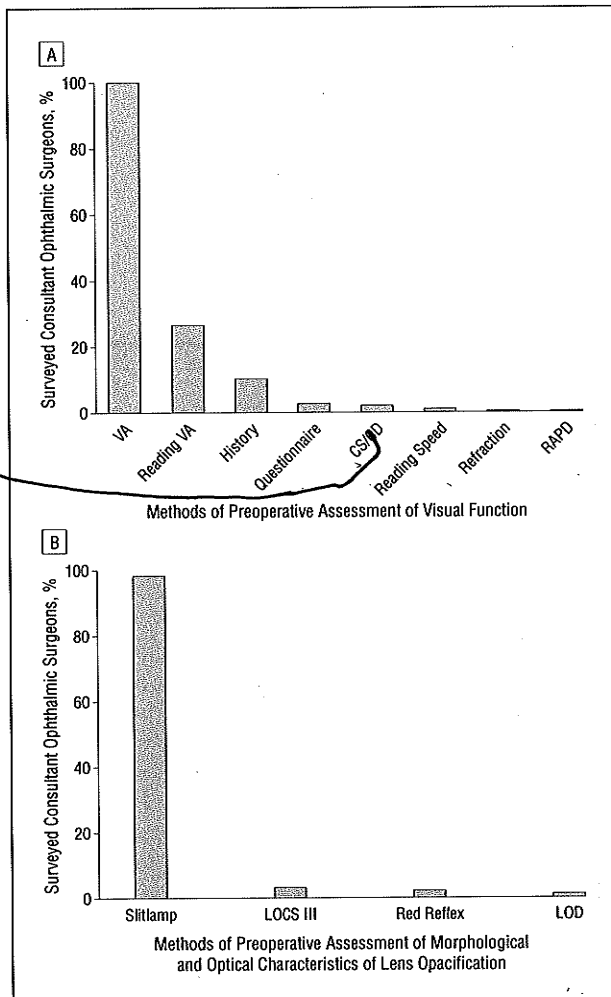


Figure 3. The relative popularity of methods used by consultant ophthalmic surgeons in the United Kingdom and the Republic of Ireland for evaluating patients before cataract surgery. A, Methods of assessment of visual function in patients being considered for cataract surgery before the procedure. B, Methods of preoperative assessment of morphological and optical characteristics of lens opacification in patients being considered for cataract surgery before the procedure. CS indicates contrast sensitivity; GD, glare disability; LOCS III, Lens Opacities Classification System III; LOD, lens optical density; RAPD, relative afferent pupillary defect; and VA, visual acuity.

CDVA preoperatively. It is likely that these patients are reporting the symptoms of loss of CS, which is further provoked under conditions of glare, leading to GD, which is known to be associated with degradation of the retinal image as a result of intraocular stray light arising at the lens opacity.³³ Our findings are consistent with those of previous investigators^{18,19,21,22,24} with respect to GD and cataract and with regard to alleviation of GD after surgical removal of the lens opacity.

Improvement in visual functioning after cataract surgery was related to the preoperative questionnaire score (Figure 2); a high preoperative score was associated with the greatest improvement in visual functioning, although this finding should be interpreted with some degree of caution because the preoperative score is part of both variables. Nevertheless, this finding suggests a role for formal assessment of patients' subjective visual functioning in the preoperative setting. We make this suggestion, mindful that only 2.6% of consultant ophthalmic surgeons in the United Kingdom

and Republic of Ireland routinely use a questionnaire in the preoperative evaluation of patients with cataract. This finding also has important medicolegal implications relating to documentation of visual performance and visual functioning before cataract surgery.⁴⁴ If we fail to measure and document variables that relate to the improvement of subjectively perceived visual functioning after cataract surgery and continue to measure CDVA only, we will be unable to draw on documentation demonstrating that the patient had subjectively perceived impairment of visual functioning and that he or she was likely to benefit from surgery.

Therefore, we believe that there is a rationale to support the incorporation of GD testing under mesopic and/or photopic conditions (at 1.5 and/or 3.0 cpd), as well as evaluation of functional vision by means of a validated questionnaire, into the preoperative assessment of patients with symptomatic nonadvanced cataract. These supplemental tests represent only a 5- to 10-minute extension of a typical preoperative assessment for cataract surgery, depending on whether the questionnaire is completed before that consultation.

We report no significant correlation between preoperative (baseline) VA and improvement in visual functioning and no statistically significant correlation between the observed improvement in CDVA and the observed improvement in self-reported visual functioning. Furthermore, we found that the subgroup of patients with preoperative CDVA of 0.0 logMAR or better (Snellen equivalent, $\geq 20/20$) in the study eye did not differ significantly from the subgroup of patients with preoperative CDVA of less than 0.0 logMAR ($< 20/20$) in terms of change in perceived visual functioning. A similar finding is reported when patients were dichotomized according to preoperative CDVA of 0.2 or better vs less than 0.2 logMAR (20/32), indicating that preoperative CDVA in this group of patients is of no prognostic value in discriminating between those who are and are not likely to experience improvement in visual functioning after the procedure. These findings are clinically important given that CDVA is the only psychophysical test used by most consultant ophthalmic surgeons and suggest that VA used in isolation is not the most appropriate test for assessing symptomatic nonadvanced cataract.

Visual acuity is a measure of the spatial resolving ability of the visual system under conditions of very high contrast. In terms of CS, VA is defined as a measure of the highest spatial frequency that can be detected at 100% contrast.⁴⁵ However, CDVA alone fails to capture the functional problems attributable to cataract because it measures only one aspect of visual impairment. Most individuals engage in few daily activities that involve visual stimuli at 100% contrast, reflected in the consensus that CS is a stronger correlate of visual function.²²

In conclusion, this study shows that the strongest preoperative indicators for improvement in visual functioning after surgery for symptomatic nonadvanced cataract are GD (tested at low and medium spatial frequencies) and questionnaire score. Neither preoperative CDVA nor change in CDVA after the procedure relates to the observed improvement in visual functioning. These findings suggest that ophthalmologists should not select patients with symptomatic nonadvanced cataract for surgery on the basis of CDVA alone but rather should consider introducing GD

testing at low and medium spatial frequencies and administration of a validated visual functioning questionnaire into the decision-making process. These tests are simple to administer, consume very little time, and can easily be incorporated into a busy ophthalmic practice.

Submitted for Publication: December 15, 2010; final revision received February 24, 2011; accepted March 2, 2011.
Author Affiliations: Institute of Eye Surgery and Institute of Vision Research, Whitfield Clinic (Drs Charalampidou, Nolan, and Beatty), and Macular Pigment Research Group, Waterford Institute of Technology (Drs Loughman, Nolan, Stack, and Beatty), Waterford, Ireland; Department of Postgraduate Studies, School of Medicine (Dr Charalampidou), and Department of Ophthalmology (Dr Cassidy), Trinity College Dublin, Department of Optometry, School of Physics, Dublin Institute of Technology (Dr Loughman), and Department of Ophthalmology, Royal Victoria Eye and Ear Hospital (Dr Cassidy), Dublin, Ireland; African Vision Research Institute, Faculty of Health Sciences, University of KwaZulu-Natal, Durban, South Africa (Dr Loughman); and National Health and Medical Research Council Centre for Clinical Eye Research, Department of Optometry and Vision Science, Flinders Medical Centre and Flinders University of South Australia, Bedford Park (Dr Pesudovs).
Published Online: May 9, 2011. doi:10.1001/archophthalmol.2011.111

Correspondence: Sofia Charalampidou, MRCPI, MR-COphth, Institute of Eye Surgery and Institute of Vision Research, Ste 14, Whitfield Clinic, Butlerstown North, Cork Rd, Waterford, Ireland (sonia.sofial@gmail.com).
Author Contributions: Dr Charalampidou had full access to all the data in the study and takes responsibility for the integrity of the data and the accuracy of the data analysis.
Financial Disclosure: None reported.

REFERENCES

1. Klein BE, Klein R, Lee KE, Gangnon RE. Incidence of age-related cataract over a 15-year interval: the Beaver Dam Eye Study. *Ophthalmology*. 2008;115(3):477-482.
2. Kanthan GL, Wang JJ, Rochtchina E, et al. Ten-year incidence of age-related cataract and cataract surgery in an older Australian population: the Blue Mountains Eye Study. *Ophthalmology*. 2008;115(5):808-814.e1. doi:10.1016/j.ophtha.2007.07.008.
3. Congdon N, Vingerling JR, Klein BE, et al; Eye Diseases Prevalence Research Group. Prevalence of cataract and pseudophakia/aphakia among adults in the United States. *Arch Ophthalmol*. 2004;122(4):487-494.
4. Congdon N, O'Colmain B, Klaver CC, et al; Eye Diseases Prevalence Research Group. Causes and prevalence of visual impairment among adults in the United States. *Arch Ophthalmol*. 2004;122(4):477-485.
5. Arias E, Rostron BL, Tejada-Verá B. United States life tables, 2005. *Natl Vital Stat Rep*. 2010;58(10):1-132.
6. Etzioni DA, Liu JH, Maggard MA, Ko CY. The aging population and its impact on the surgery workforce. *Ann Surg*. 2003;238(2):170-177.
7. Quintana JM, Arostegui I, Alberdi T, et al; IRYSS-Cataract Group. Decision trees for indication of cataract surgery based on changes in visual acuity [published online April 22, 2010]. *Ophthalmology*. doi:10.1016/j.ophtha.2009.12.041.
8. Las Hayas C, González N, Aguirre U, et al; IRYSS-Cataract Group. Can an appropriateness evaluation tool be used to prioritize patients on a waiting list for cataract extraction? *Health Policy*. 2010;95(2-3):194-203.
9. Quintana JM, Escobar A, Bilbao A, et al; IRYSS-Cataract Group. Validity of newly developed appropriateness criteria for cataract surgery. *Ophthalmology*. 2009;116(3):409-417.e3. doi:10.1016/j.ophtha.2008.07.017.
10. Gutiérrez SG, Quintana JM, Bilbao A, et al; IRYSS Cataract Group. Validation of priority criteria for cataract extraction. *J Eval Clin Pract*. 2009;15(4):675-684.
11. Kuoppala J, Falck A, Winblad I, Tuulonen A. The Pyhäjärvi Cataract Study II: criteria for cataract surgery [published online June 18, 2010]. *Acta Ophthalmol*. doi:10.1111/j.1755-3768.2010.01935.x.

12. Lundström M, Albrecht S, Håkansson I, et al. NIKE: a new clinical tool for establishing levels of indications for cataract surgery. *Acta Ophthalmol Scand*. 2006;84(4):495-501.
13. Yamaguchi T, Negishi K, Dogru M, Saiki M, Tsubota K. Improvement of functional visual acuity after cataract surgery in patients with good pre- and postoperative spectacle-corrected visual acuity. *J Refract Surg*. 2009;25(5):410-415.
14. Mordue A, Parkin DW, Baxter C, Fawcett G, Stewart M. Thresholds for treatment in cataract surgery. *J Public Health Med*. 1994;16(4):393-398.
15. Desai P, Reidy A, Minassian DC. Profile of patients presenting for cataract surgery in the UK: national data collection. *Br J Ophthalmol*. 1999;83(8):893-896.
16. Taylor HR, Vu HT, Keeffe JE. Visual acuity thresholds for cataract surgery and the changing Australian population. *Arch Ophthalmol*. 2006;124(12):1750-1753.
17. Jaeschke R, Singer J, Guyatt GH. Measurement of health status: ascertaining the minimal clinically important difference. *Control Clin Trials*. 1989;10(4):407-415.
18. Superstein R, Boyaner D, Overbury O. Functional complaints, visual acuity, spatial contrast sensitivity, and glare disability in preoperative and postoperative cataract patients. *J Cataract Refract Surg*. 1999;25(4):575-581.
19. Superstein R, Boyaner D, Overbury O, Collin C. Glare disability and contrast sensitivity before and after cataract surgery. *J Cataract Refract Surg*. 1997;23(2):248-253.
20. Elliott DB. Evaluating visual function in cataract. *Optom Vis Sci*. 1993;70(11):896-902.
21. Ginsburg AP. Contrast sensitivity: determining the visual quality and function of cataract, intraocular lenses and refractive surgery. *Curr Opin Ophthalmol*. 2006;17(1):19-26.
22. Stifter E, Sacu S, Thaler A, Weghaupt H. Contrast acuity in cataracts of different morphology and association to self-reported visual function. *Invest Ophthalmol Vis Sci*. 2006;47(12):5412-5422.
23. Chua BE, Mitchell P, Cumming RG. Effects of cataract type and location on visual function: the Blue Mountains Eye Study. *Eye (Lond)*. 2004;18(8):765-772.
24. Aslam TM, Haider D, Murray IJ. Principles of disability glare measurement: an ophthalmological perspective. *Acta Ophthalmol Scand*. 2007;85(4):354-360.
25. Stifter E, Sacu S, Benesch T, Weghaupt H. Impairment of visual acuity and reading performance and the relationship with cataract type and density. *Invest Ophthalmol Vis Sci*. 2005;46(6):2071-2075.
26. Stifter E, Sacu S, Weghaupt H. Functional vision with cataracts of different morphologies: comparative study. *J Cataract Refract Surg*. 2004;30(9):1883-1891.
27. Lundström M, Pesudovs K. Catquest-9SF patient outcomes questionnaire: nine-item short-form Rasch-scaled revision of the Catquest questionnaire. *J Cataract Refract Surg*. 2009;35(3):504-513.
28. Chylack LT Jr, Wolfe JK, Singer DM, et al; Longitudinal Study of Cataract Study Group. The Lens Opacities Classification System III. *Arch Ophthalmol*. 1993;111(6):831-836.
29. Davison JA, Chylack LT. Clinical application of the lens opacities classification system III in the performance of phacoemulsification. *J Cataract Refract Surg*. 2003;29(1):138-145.
30. Grewal DS, Brar GS, Grewal SP. Correlation of nuclear cataract lens density using Scheimpflug images with Lens Opacities Classification System III and visual function. *Ophthalmology*. 2009;116(8):1436-1443.
31. Kirkwood BJ, Hendicott PL, Read SA, Pesudovs K. Repeatability and validity of lens densitometry measured with Scheimpflug imaging. *J Cataract Refract Surg*. 2009;35(7):1210-1215.
32. Ortiz D, Alió JL, Ruiz-Colechá J, Oser U. Grading nuclear cataract opacity by densitometry and objective optical analysis. *J Cataract Refract Surg*. 2008;34(8):1345-1352.
33. Pei X, Bao Y, Chen Y, Li X. Correlation of lens density measured using the Pentacam Scheimpflug system with the Lens Opacities Classification System III grading score and visual acuity in age-related nuclear cataract. *Br J Ophthalmol*. 2008;92(11):1471-1475.
34. Wright BD. *Masters GN Rating Scale Analysis (Rasch Measurement Book)*. Chicago, IL: MESA Press; 1982.
35. Wright BD, Stone MH. *Best Test Design; Rasch Measurement*. Chicago, IL: MESA Press; 1979.
36. Gotthwal VK, Wright TA, Lamoureux EL, Pesudovs K. Measuring outcomes of cataract surgery using the Visual Function Index-14. *J Cataract Refract Surg*. 2010;36(7):1181-1188.
37. Gotthwal VK, Wright TA, Lamoureux EL, Pesudovs K. Rasch analysis of the quality of life and vision function questionnaire. *Optom Vis Sci*. 2009;86(7):E836-E844. doi:10.1097/OPX.0b013e3181ae1ec7.
38. Hohberger B, Laemmer R, Adler W, Juenemann AG, Horn FK. Measuring contrast sensitivity in normal subjects with OPTEC 6500: influence of age and glare. *Graefes Arch Clin Exp Ophthalmol*. 2007;245(12):1805-1814.
39. Stifter E, König F, Lang T, et al. Reliability of a standardized reading chart system: variance component analysis, test-retest and inter-chart reliability. *Graefes Arch Clin Exp Ophthalmol*. 2004;242(1):31-39.
40. Rohrschneider K, Springer C, Bultmann S, Volcker HE. Microperimetry—comparison between the micro perimeter 1 and scanning laser ophthalmoscope—fundus perimetry. *Am J Ophthalmol*. 2005;139(1):125-134.
41. Loughman J, Akkai MC, Beatty S, et al. The relationship between macular pigment and visual performance. *Vision Res*. 2010;50(13):1249-1256.
42. Pesudovs K, Hazel CA, Doran RM, Elliott DB. The usefulness of Vistech and FACT contrast sensitivity charts for cataract and refractive surgery outcomes research. *Br J Ophthalmol*. 2004;88(1):11-16.

02/4/11

43. Hejzmanová M, Bytton L, Langrová H. Evaluation of subjective complaints of patients with a visual acuity of 20/30 to 20/20 before and after cataract surgery [in Czech]. *Cesk Slov Oftalmol.* 2004;60(2):143-148.
44. Panting G. How to avoid being sued in clinical practice. *Postgrad Med J.* 2004;

- 80(941):165-168.
45. Owsley C. Contrast sensitivity. *Ophthalmol Clin North Am.* 2003;16(2):171-177.

Please
cut for
7 pages?
(from back of article
if possible)